

Child Protection - Methamphetamine Decontamination

Document Type	Policy
Function	Clinical Practice
Directorate(s)	Starship Child Health
Department(s) affected	Te Puaruruhau
Applicable for which patients, clients or residents?	Children and young people exposed to clandestine laboratories
Applicable for which staff members?	Te Puaruruhau clinicians
Key words (not part of title)	Laboratories, P lab,
Author – role only	Team Leader, Te Puaruruhau, Child Protection Services
Owner (see ownership structure)	Clinical Director, Te Puaruruhau, Child Protection Services
Edited by	Clinical Policy Advisor
Date first published	June 2008
Date this version published	January 2015
Review frequency	3 years
Unique Identifier	PP3021/PCR/028

Contents

1. [Purpose of policy](#)
2. [Policy statements](#)
3. [Medical examination](#)
4. Flowchart: [Decontamination process](#)
5. [Supporting evidence](#)
6. [Legislation](#)
7. [Associated ADHB documents](#)
8. [Corrections and amendments](#)

1. Purpose of policy

The purpose of this policy is to ensure that a child, having been exposed to clandestine laboratories and therefore requiring forensic and medical assessment, is safely decontaminated prior to being seen by Te Puaruruhau within Auckland District Health Board (Auckland DHB).

The National Clandestine Laboratory Response Team is available on call for advice 24 hours on cell phone 027-273-1540.

[Back to Contents](#)

2. Policy statements

The information below details the process that must be undertaken prior to a medical assessment when managing a child exposed to clandestine laboratories.

Health assessments can be requested by CYF under Section 53 but Police must agree to the collection of forensic samples for their investigation and processing at ESR.

CYF or Police are responsible for ensuring that an exposed child is transported to a suitable site for decontamination wearing a Tyvek suit.

Decontamination must occur prior to medical assessment to limit the amount of methamphetamine exposure to health professionals. CYF and Police will arrange an appropriate venue for this to occur.

If decontamination has not occurred prior to medical assessment, then they are to be received without items from the site in Tyvek suits and must be showered and re-clothed immediately.

If decontamination has not occurred when the child arrives at Te Puaruruhau follow the decontamination process flowchart. This is only to be used in extreme circumstances, it is preferred that decontamination occurs by police.

The Tyvek suit is to be retained and handed to Police following medical assessment, along with any other clothing worn.

Medical examinations are to be done with CYF consent under S53 (3), CYF must have made all reasonable effort to obtain consent from a parent or guardian.

The Police will place the child in CYF care at the scene under Section 39 warrant and Section 42 placement orders.

[Back to Contents](#)

3. Medical examination

The medical examination must be conducted using Hair and Urine Collection kits provided by the police using chain of evidence procedures. The samples will be collected by the police following the examination.

To be conducted within 24 hours (use sample collection kits provided by Police)

Medical examinations may be undertaken at the request of a social worker under section 53(3) of the Children Young Persons and their Families Act 1989.

Note: Hair and urine samples provide best information.

The tests required include:

Police

- Hair sample obtained using ESR hair sample kit (see associated Auckland DHB documents section for forensic hair and nail sampling guideline)
- Urine sample obtained within 24 hours using ESR urine sample kit
- A urine sample is only appropriate if a hair sample cannot be obtained
- Collected and sealed under chain of evidence

Health: To be documented in CR3773: Te Puaruruhau Record Booklet

- Full blood count
- Liver function tests
- Renal function

To be conducted within 72 hours

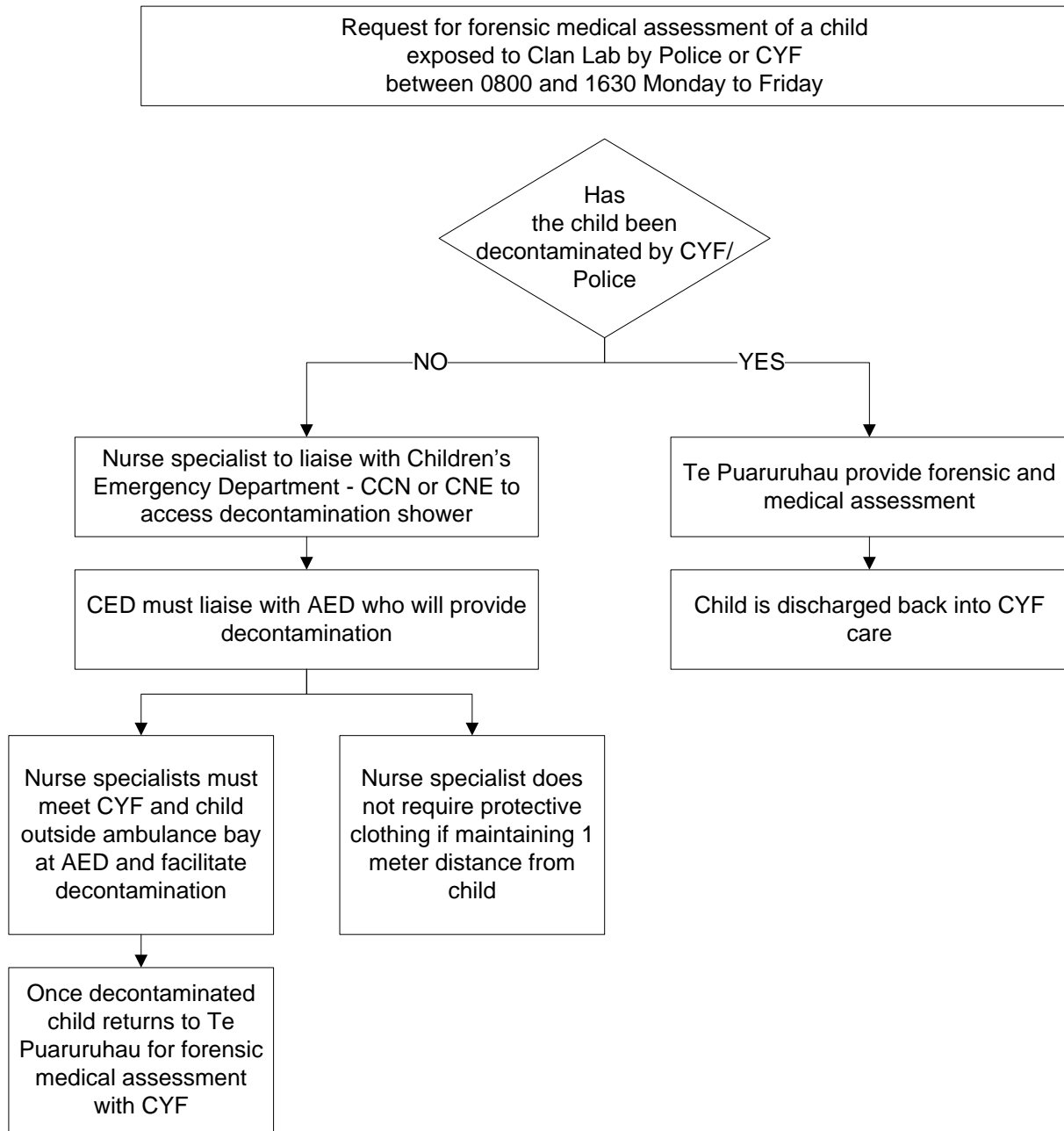
General medical examination includes:

- The child's medical history
- Physical examination
- General health
- Vital signs
- Height/weight
- Growth and development check
- Respiratory assessment
- Vision and hearing
- Neurological screen
- Cardiovascular assessment
- ENT assessment

Once this process has been completed the child must be discharged into CYF care.

[Back to Contents](#)

4. Decontamination process



[Back to Contents](#)

5. Supporting evidence

- Interagency management of children found in clandestine labs
- [Joint Operating Procedures for Children and Young Persons in Clandestine Laboratories - agreement between CYF and Police](#)

[Back to Contents](#)

6. Legislation

- [Children Young Persons and their Families Act 1989 Section 53\(3\)](#)

[Back to Contents](#)

7. Associated ADHB documents

- [Child Protection Forensic Hair & Nail Sampling for Toxicology](#)
- [Informed Consent](#)
- [Legal Issues Relating to Children](#)

Clinical forms

- CR3773: Te Puaruruhau Record Booklet

[Back to Contents](#)

8. Corrections and amendments

The next scheduled review of this document is as per the document classification table (page 1). However, if the reader notices any errors or believes that the document should be reviewed **before** the scheduled date, they should contact the owner or the [Clinical Policy Advisor](#) without delay.

[Back to Contents](#)